



CROWNE PLAZA®

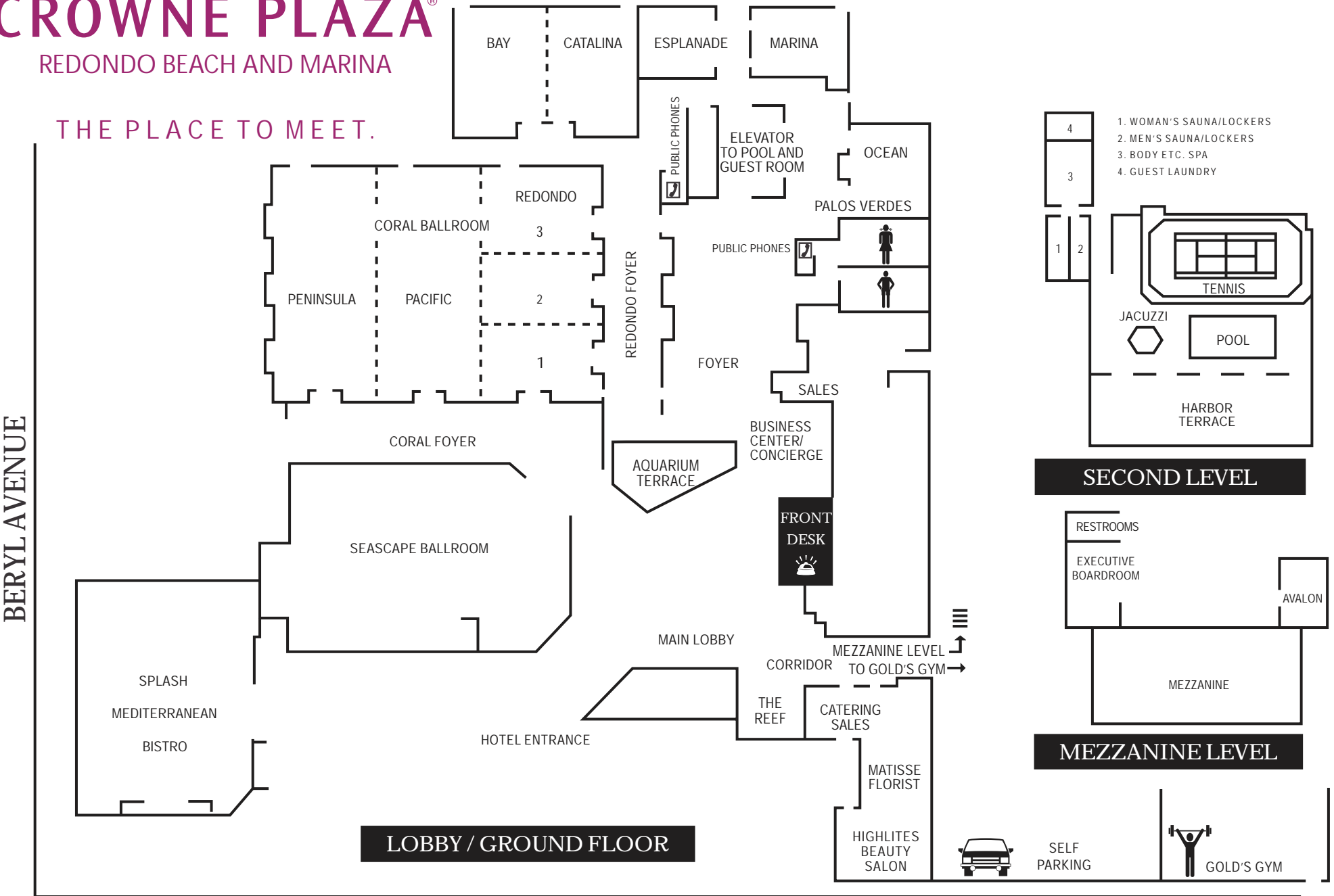
REDONDO BEACH AND MARINA

THE PLACE TO MEET.

CATALINA AVENUE

BERYL AVENUE

HARBOR BOULEVARD



LOBBY / GROUND FLOOR

SECOND LEVEL

MEZZANINE LEVEL



SELF PARKING



GOLD'S GYM



Coral Ballroom

Our superior facilities, combined with an experienced planning and coordinating staff, ensure that your meeting will be a success at the Crowne Plaza Redondo Beach & Marina Hotel



CROWNE PLAZA®

REDONDO BEACH AND MARINA

THE PLACE TO MEET.

Why Go Anywhere Else?



Executive Boardroom

The Executive Boardroom offers a luxurious upscale setting for the private and important meeting, complete with executive amenities, a lounge and special services

| Room | Dimensions Ft | Sq. Ft. | Height Ft. | Capacity of People per Set Up | | | | | | |
|---|---------------|---------|------------|--|---------|------------------|---------|-----------|------------------------|--------------------|
| | | | | Reception | Banquet | with Dance Floor | Theater | Classroom | Conference U-Shape | Exhibit (8' x 10') |
| Coral Ballroom Foyer | | 3500 | 13 | 400 | | | | | | |
| Redondo Foyer | | 1500 | 13 | 200 | | | | | | |
| CORAL BALLROOM | 94x80 | 7250 | 13-15.5 | 1000 | 580 | 500 | 900 | 400 | | 40 |
| Peninsula, Pacific, Redondo (ea) | 31x80 | 2480 | 13 | 300 | 180 | 140 | 250 | 115 | 50 | 12 |
| Redondo Salon 1 | 30x40 | 1200 | 13 | 100 | 50 | | 90 | 50 | 40 | |
| Salon 2 & 3 | 30x40 | 1200 | 13 | 100 | 30 | | 40 | 25 | 45 | |
| SEASCAPE BALLROOM* | 70x52 | 3640 | 12 | 320 | 250 | 180 | 150 | 90 | 46 | 20 |
| Bay, Catalina (ea) | 38x26 | 988 | 11.5 | 75 | 60 | | 80 | 40 | 30 | |
| Bay & Catalina (combination) | 38x52 | 1976 | 11.5 | 175 | 120 | 80 | 130 | 60 | | |
| Esplanade, Marina (ea) | 25x21 | 525 | 11.5 | 35 | 30 | | 40 | 24 | 24/20 | |
| Ocean | 24x25 | 600 | 11.5 | 45 | 40 | | 40 | 20 | 24/16 | |
| Palos Verdes | 13x29 | 377 | 11.5 | 25 | 20 | | 30 | 10 | 15 (conf. set only) | |
| Mezzanine* | 68x31 | 1900 | 8 | 175 | 100 | 80 | 90 | 50 | 40/34 | |
| Avalon | 17x15 | 255 | 8 | | 12 | | | | | |
| Executive Boardroom | 29x19 | 551 | 8 | | 16 | | | | | |
| Splash Bistro | | | | | 140 | | | | | |
| Splash Show Kitchen | | | | | 50 | | | | | |
| Private Dining Room | | | | | | | | | 17 (conf. set only) | |
| Patio | | | | | 40 | | | | | |
| Harbor Terrace* | 136x46 | 6256 | | 600 | 450 | | 550 | | | |
| *Ocean View | | | | *Ballroom capacity does not include elaborate staging | | | | | | |
| **All functions booked on Harbor Terrace must have approval of the Director of Catering | | | | **All Classroom standard sets are based on 3 attendees per 6' table. | | | | | | |